

MicW[®] User's Manual



iBoundary Microphone
www.micwaudio.com

INTRODUCTION

Welcome to the MicW i-Series. For more than a decade we have been producing professional microphones for test, measurement and studio recording. Our unique knowledge of diaphragm technology has enabled us to offer you the highest quality products for a range of audio applications.

The i-Series has been specifically designed for use with iPad, iPhone, iPod Touch and other mobile devices. The entire microphone range delivers

outstanding results in a variety of audio recording and broadcast situations.

The iBoundary microphone presents a perfect solution for meeting rooms, conference facilities, courtrooms and other venues where speech capture/reinforcement and speech intelligibility are required. It is also highly effective as an IM tool.

SAFETY INSTRUCTION

The iBoundary microphone uses a pre-polarized capsule that has been tested both at high temperatures and in very humid conditions for over 24 hours prior to factory release. The microphone is therefore highly resistant to temperature and humidity. It can be safely operated in temperatures ranging from -20 to 50°C, as well as in environments with up to 95% humidity.

POWER SUPPLY

The iBoundary does not require an external power supply.



APPLICATIONS

The iBoundary is highly recommended for vocal recording/reinforcement.

- Meeting Room



- Conference Facilities

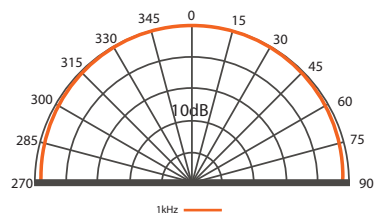


- IM Tools



DIRECTIONAL CHARACTERISTICS

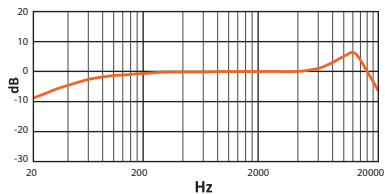
The iBoundary is an omnidirectional microphone.



iBoundary Polar Pattern

FREQUENCY RESPONSE

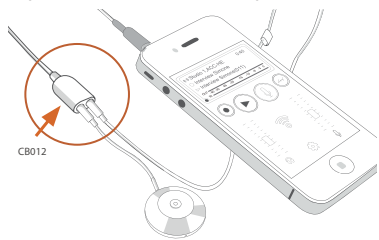
Typical frequency response is shown in the following chart.



Typical frequency response of the iBoundary

* Split Cable CB012

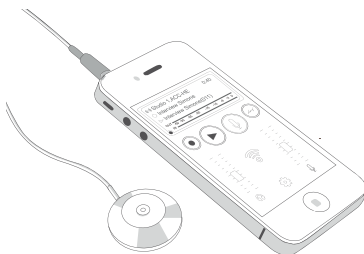
The CB012 split cable enables you to use both the microphone and a headphone. Simply plug the cable into the mobile device's headset socket and connect the microphone and headphone to the separate sockets on the adaptor.



MICROPHONE INSTALLATION

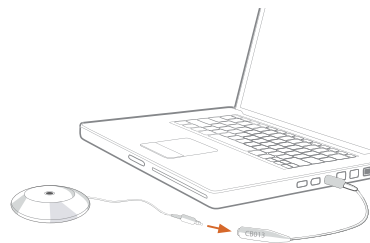
* Mobile devices • Smartphones

On many mobile devices, the MicW iBoundary will automatically be detected by simply connecting it to the headset socket.



* Computers

Using the iBoundary with a Windows PC is very simple. Connect to the computer via the supplied CB013 adaptor cable, then activate the mic input in your system settings.



WARRANTY POLICY

MicW Audio warrants that its products will be free from defects in material and workmanship for two (2) years from the date of purchase by the Original Purchaser.

CE MARKING



MicW iBoundary conforms to the relevant CE mark directives approved by the European commission

SPECIFICATIONS

Microphone iBoundary	
Type	Electret Condenser
Capsule Diameter	7.0mm
Principle of operation	Pressure
Polar Pattern	Half Omni
Sensitivity(±4dB)	-35dB(17.8mV/Pa)
Frequency Response	20-20kHz
Maximum SPL	115dB
S/N ratio	More than 62dB
Impedance	Less than 2.2kOhm
Power Supply	Plug and Play
Size	Φ40mm*9mm
Cable Length	95cm
Weight	70g

WHAT'S IN THE BOX

The iBoundary contains the following items:



OPTIONAL ACCESSORIES



SA011
Split adaptor for 3.5mm microphone input and headphone output jacks



SA012
T Split adaptor accommodating one microphone and one headset

MicW®

a member of BSWA Technology Ltd.
Unit 1003, North Ring Center No.18 Yumin Road,
Xicheng District, Beijing 100029, China
Phone: +86-10-5128 5118
Fax: +86-10-8225 1626
Email: sales@micwaudio.com
Web: www.micwaudio.com



MicW microphones

Product features and specifications are subject to change without notice